



The need for impactful fertility and family building benefits

The need for fertility benefits is growing, as infertility impacts 1 in 5 women¹. Plus, people are starting families later, when it is harder to have a baby, and are pursuing a variety of paths to parenthood.

Despite an increased need, individuals lack access to quality care and comprehensive coverage. Carrier and dollar max plans and wallet/reimbursement plans don't cover fertility fully or in the same manner as is best practice for other medical conditions. This leads to a burdensome, disjointed member experience that results in compromises in care, poor outcomes, and increased costs. **Additionally, dollar max fertility benefits unwittingly discriminate, are inequitable, and perpetuate stigma regarding fertility.**

Helping members grow their families for over seven years

Progyny members are more likely to achieve a healthy pregnancy and have a healthy baby. Progyny's fertility and family building

68%

of adults would switch jobs for better fertility benefits²

63%

of LGBTQ+ individuals expect to use assisted reproductive technology, foster care, or adoption to become parents³

1. CDC, heterosexual women, <https://www.cdc.gov/reproductivehealth/infertility/index.htm> | 2. <https://www.axios.com/2022/10/11/fertility-benefit-reproductive-health-labor> | 3. LGBTQ Family Building Survey, <https://www.familyequality.org/resources/lgbtq-family-building-survey/>



solution brings together four components – **a dedicated, 1:1 member service model complemented by digital tools; comprehensive and equitable benefit design; the largest, actively managed provider network, and integrated Rx** – all of which uniquely work together to deliver these superior outcomes, as compared to other solutions in market.

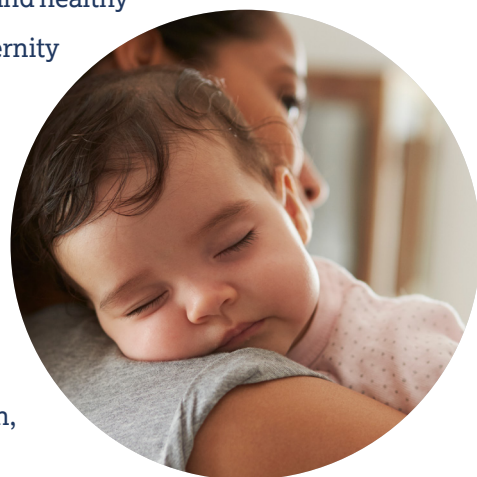
What makes Progyny unique

- Members are paired with their perfect, dedicated **Patient Care Advocate (PCA)** through **MemberMatch**. Starting with robust preconception support, PCAs guide on best clinical practices, care decisions, emotional wellness needs, and more, all complemented by digital tools.
- Our **benefit design** mirrors how members engage with healthcare for other medical conditions. The Smart Cycle design bundles all of the individual services, tests, and treatments, **ensuring members have equitable, comprehensive coverage**.
- Our large, curated **network of top fertility specialists** is actively managed to ensure the best outcomes and is the largest network of BIPOC, LGBTQ+, and female providers in the country.
- **Progyny Rx** integrates medication within the Smart Cycle, so members don't have to keep track of another wallet card or added expense, and ensures Rx coverage is delivered equitably.
- We have a **continuous patient data exchange** with our providers, enabling PCAs to reach out proactively at key times of the member journey and clients to see real-time impact and value.

Year after year, Progyny members have a higher likelihood of a healthy pregnancy and healthy baby, requiring less treatment and less medication. This results in high-risk maternity and NICU cost avoidance for employers, in addition to retention cost-savings.

End to end pregnancy, postpartum and menopause support (add-on)

Our evidence-based Progyny Pregnancy and Postpartum and Progyny Menopause programs provide robust clinical programming, coaching, timely education,

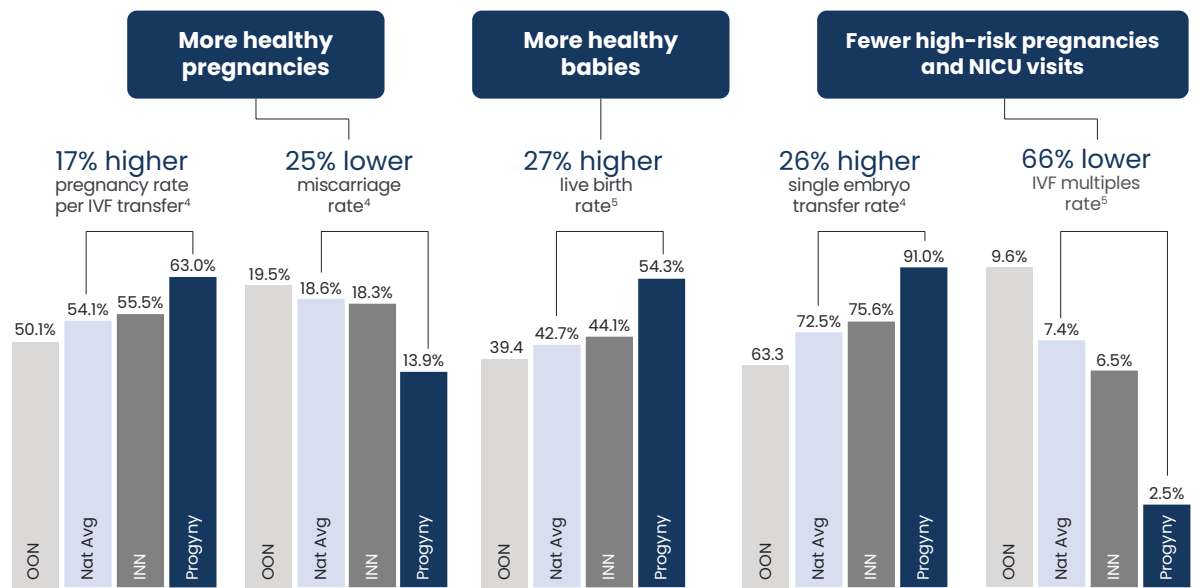


and digital companion tools. Progyny Pregnancy and Postpartum has the highest utilization of members navigating high-risk pregnancies on day 1, delivering much needed support to mitigate high-cost risks.

Holistic primary care through Progyny+ (add-on)

A proactive, preventative primary care program designed to support those with underlying health conditions such as PCOS, hormonal disorders, endometriosis, etc. from preconception through menopause. Progyny+ delivers much needed holistic primary care both in person and via telemedicine through a partnership with Parsley Health, resulting in faster time to pregnancy, reduced need for fertility treatments, and a healthier pregnancy and postpartum journey.

Superior outcomes delivering more healthy pregnancies and babies



Out of network clinic average | National Average | In-network clinic average for all patients (includes non Progyny patients at clinic) | Only Progyny Patients

Data based on 12-month period ended December 31, 2021, representing 9,633 transfers. | 4. For each Progyny outcome, the p-value when compared to the national average is <0.0001. | 1. Calculated based on the Society for Assisted Reproductive Technology, or SART, 2019 National Summary Report, finalized in 2022. | 5. Calculated based on CDC, 2020 National Summary and Clinic Data Sets, published in 2022.

Experience across 370 clients, 40+ industries, and 5.4M members

Progyny's solution is trusted by the world's leading companies across a wide variety of industries.

With 99.9% client retention, Progyny's clients see true value in the benefit and a tangible financial impact.

Progyny delivers the most value for your benefit dollar

Progyny is proud to help our members realize their dreams of growing their families.

Our model demonstrates that with a focus on member satisfaction, provider quality and a comprehensive benefit design that enables cost control, you can drive better clinical outcomes for members and better financial outcomes for employers.

370 clients
40+ industries
5.4M members
+82 NPS

It's time to do the right thing for your business and your employees

To get started call: 888.488.0704
or email: sales@progyny.com

